

## Gyro Stable Gimbal Adjust Instruction

The gyro stable gimbal module on newest XP3.1 products provides a two-dimensional gyro stable gimbal function. Once you enable this function, the gimbal will be automatically adjusted by gyro stable algorithm through a separate servo in both pitch and roll directions. User can also adjust pitch position manually.

### 1. Connection Instruction

If you buy XP3.1 with gimbal function, please connect the wires as follow figure:

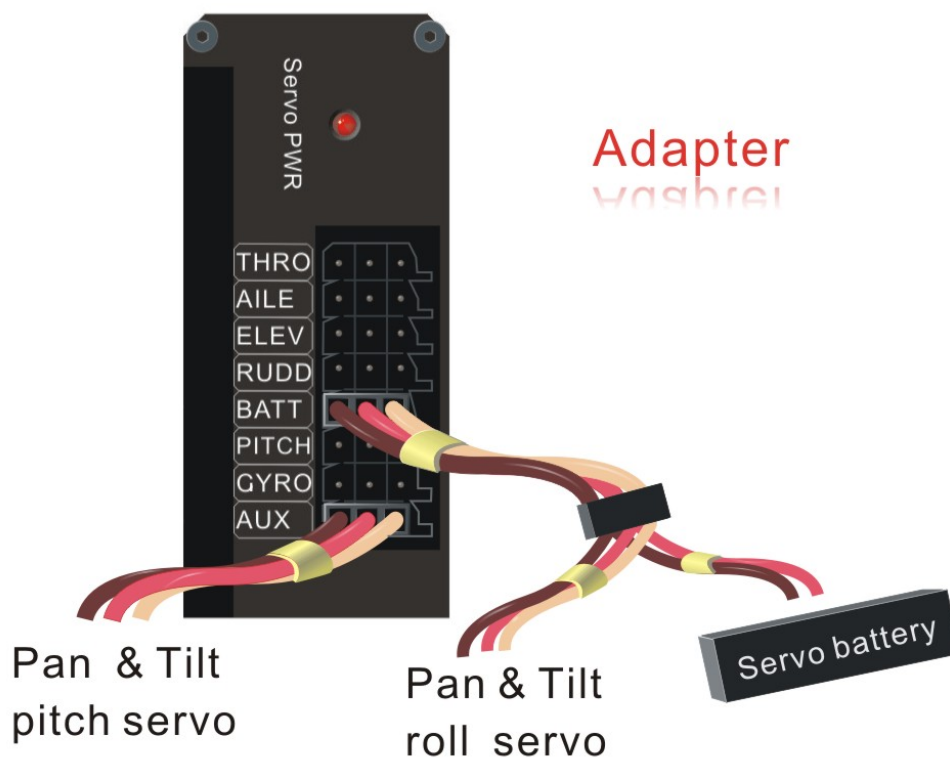


Figure 1

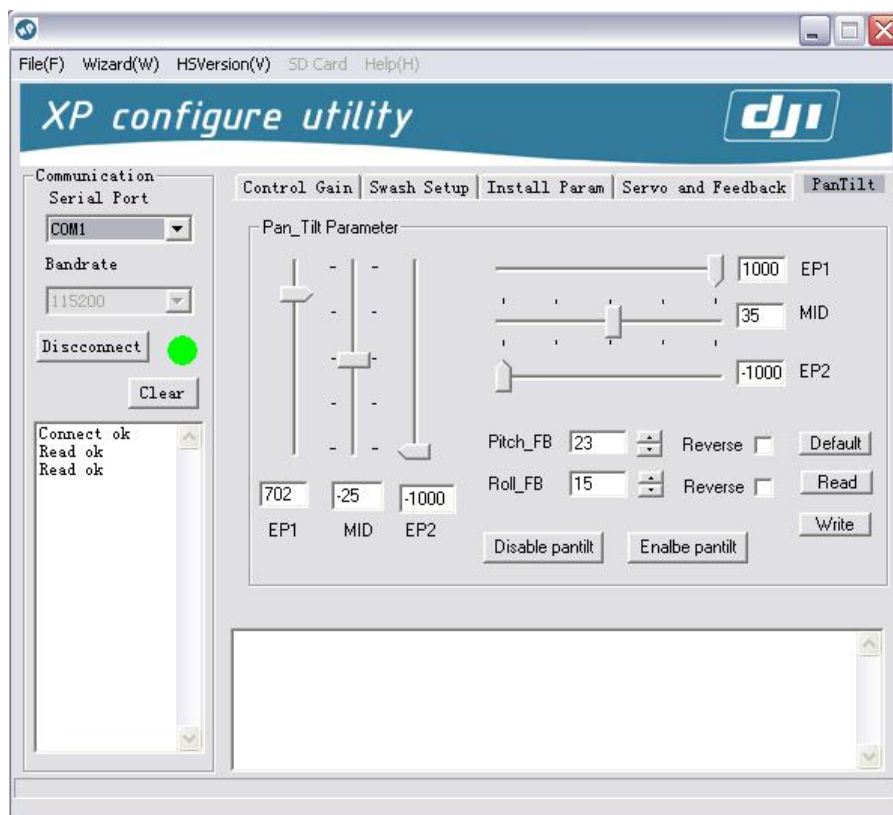
Use a “Y” connector plugged into BATT port. Of two other end, one is connected to the servo battery and another one is connected to the gimbal roll direction servo. Aux channel is connected to the gimbal pitch direction servo. Except these all other wires are connected as before.

**Attention:** XP3.1 gyro stable gimbal system can't be used on 4-servo helicopter

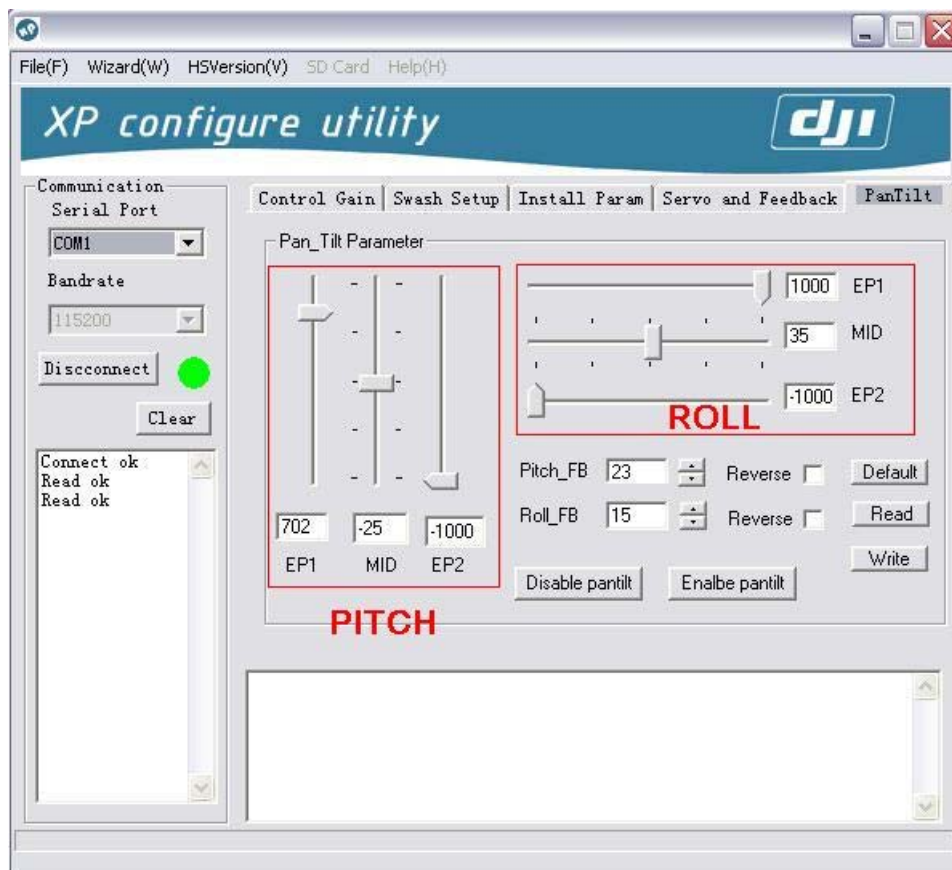
## 2. User Interface and Configuration Guides

Please download the newest XP3.1 configuration software from our website.

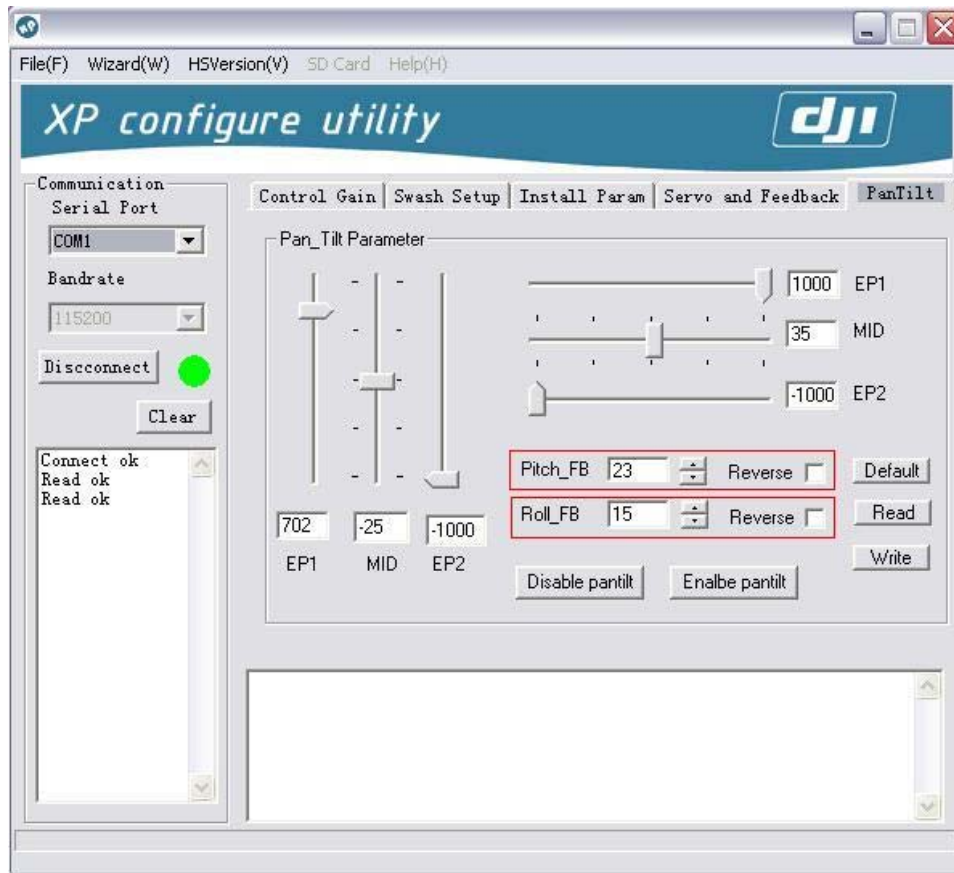
You will see an additional Tab menu “gimbal” as shown below:



The two groups of slide bars stand for pitch and roll. The three parameters in each group are: EP1 (end point 1), MID (center), EP2 (end point 2). EP1 and EP2 are maximum limits for two ends of servo rotation range. (So does roll EP1 and EP2).



Pitch\_FB and Roll\_FB are feedback gains in range 0 to 1000. They stand for feedback angle gains with different gears of gimbal. If reverse clicked, they can also have negative effects.



Click Disable gimbal to free this function for your own usage.

