

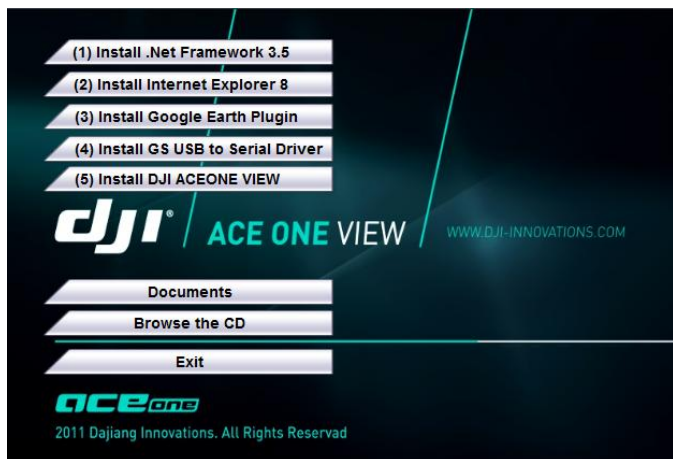
Minimum Installation Condition

- X86-PC with USB1.1/2.0 port
- OS: Windows XP SP3 / 7
- Close the Anti-virus software and firewall during installation

Ace One View Installation

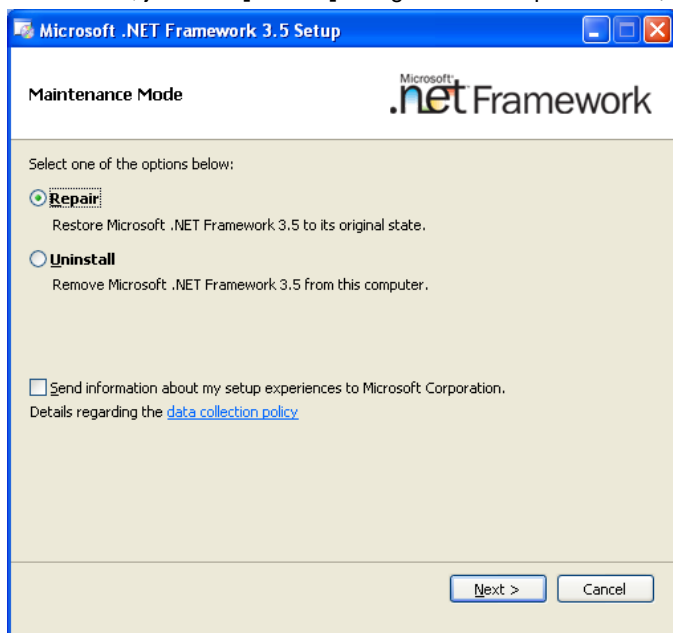
1 Log-in your computer as administrator.

2 Please insert the Ace One product CD provided along with the package. It is an Auto-run DVD, If auto-run function has been disabled in your computer, please open [My Computer]→[DJI Setup]→autorun.exe. Then, you will find the splash window as following shown. Make sure

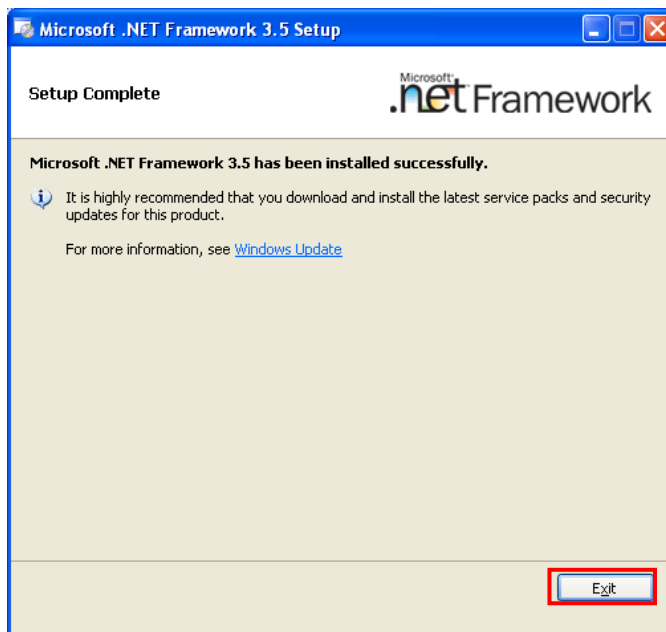
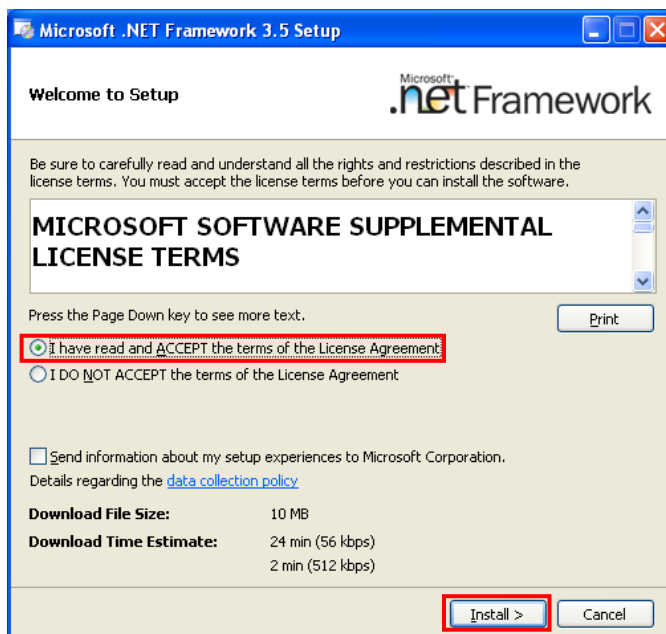


install all the software by the following procedure.

3 Click **(1) Install .Net Framework 3.5**. If you see the following window, just click [Cancel] and go to next step. Otherwise,



choose [I have read and ACCEPT the terms of License Agreement], then click [Install]. After the installation, click

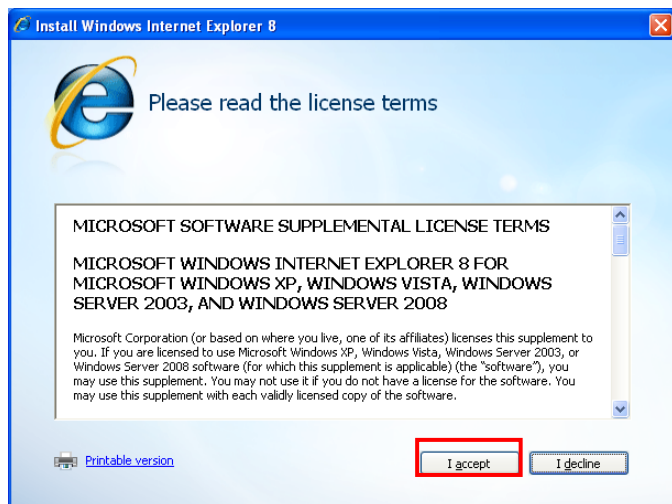


[Exit].

4 Click **(2) Install Internet Explorer 8**. Then choose one option and click **[Next]**.



Click **[I accept]**.



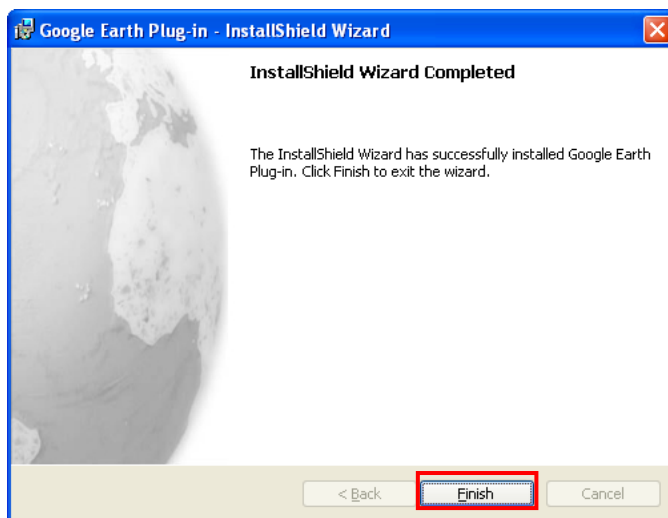
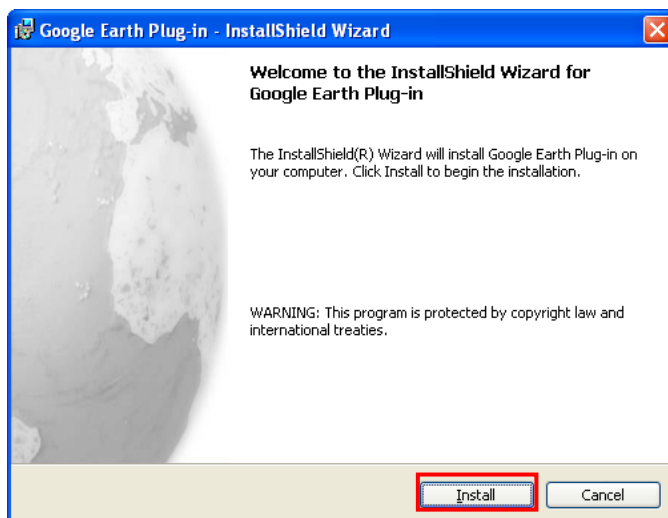
Click **[Next]** to install IE8.



Restart your computer to finish the installation.

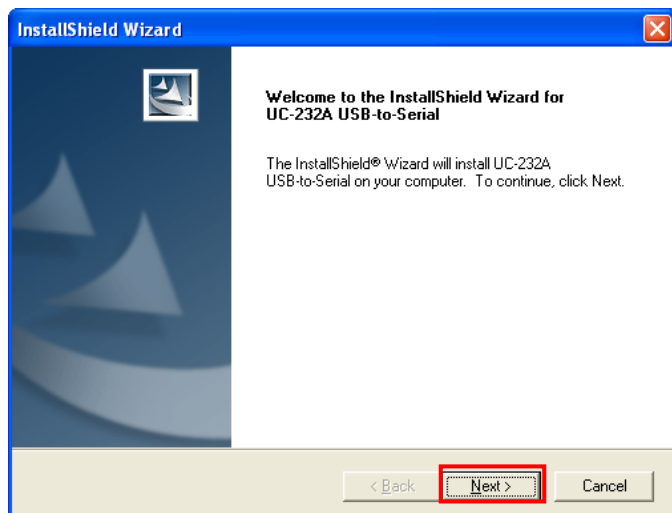


5 Click **(3) Install Google Earth Plugin**. Then click **[Install]**.

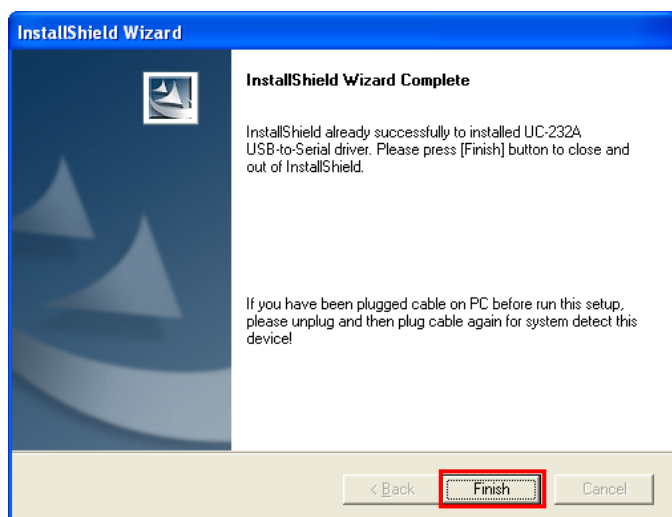


Click **[Finish]** to finish the installation.

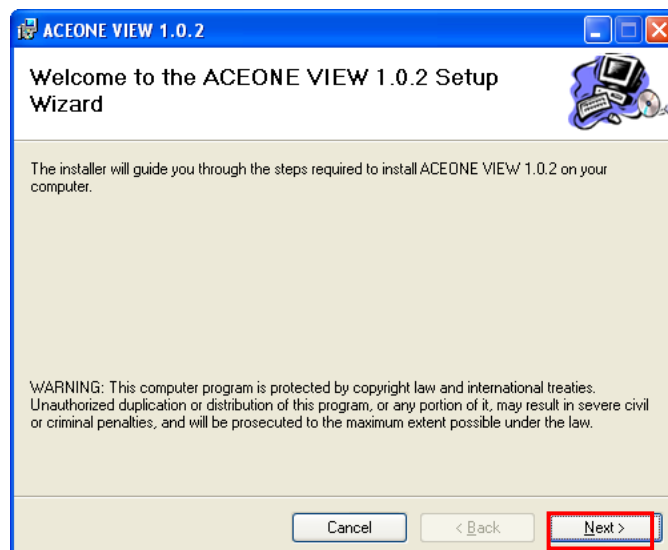
6 Click **(4) Install GS USB to Serial Driver**. Then click **[Next]** to



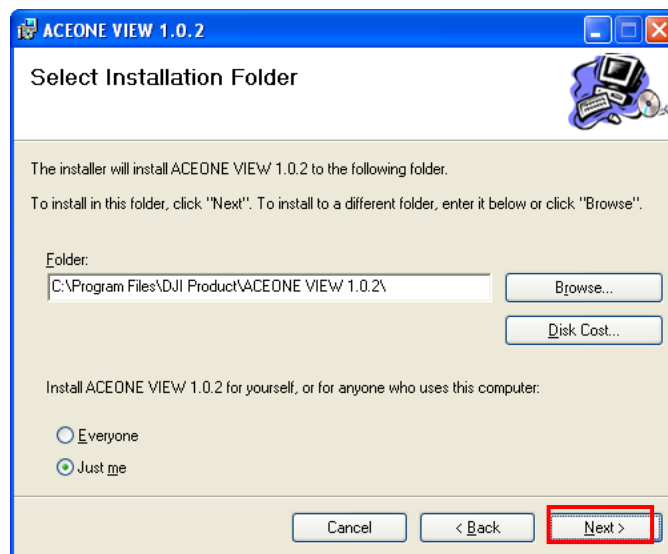
install the driver. Then click **[Finish]** to finish the installation.



7 Click **(5) Install DJI ACEONE VIEW**, then click **[Next]**,



choose where you want to install and click **[Next]**. At the end,



click **[Close]** to finish the installation.

