

Minimum Installation Condition

- X86-PC with USB1.1/2.0 port
- OS: Windows XP SP3 or Windows 7
- Close the Anti-virus software and firewall during installation

Ace One Driver Installation

For Windows XP User

1 Log-in your computer as administrator.

2 Power on your Ace One, and connect it to computer.



You will find a splash box appears in status bar which reads: Found New Hardware (DJI USB Virtual COM), **Please close it.**

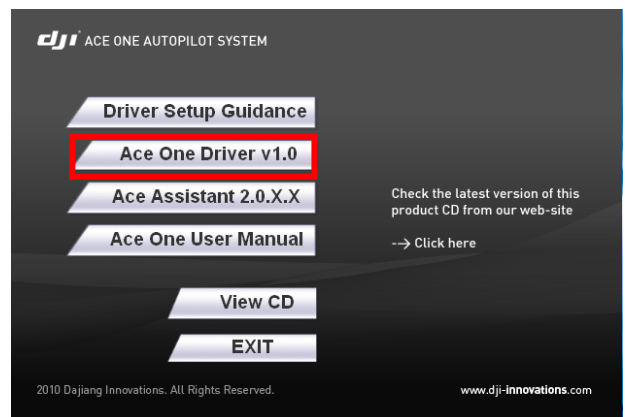


Or you may find a splash window:

Welcome to the Found New Hardware Wizard, **Please close it.**

3 Please insert the Ace One product CD provided along with the package. It is an Auto-run DVD, If auto-run function has been disabled in your computer, Please Open **[My Computer]**→**[DJI Setup]**→autorun.exe. Then, you will find the splash window as following shown.

4 Click the **[Ace One Driver v1.0]** button.



5 Follow the guidance, and press **[Next]** to continue.

6 The question about the security will appear. Click the **[Continue Anyway]** button.



7 Installation of the driver software is completed. Please restart your computer and also power cycle the Ace One.

For Windows 7 User

1 Log-in your computer as administrator.

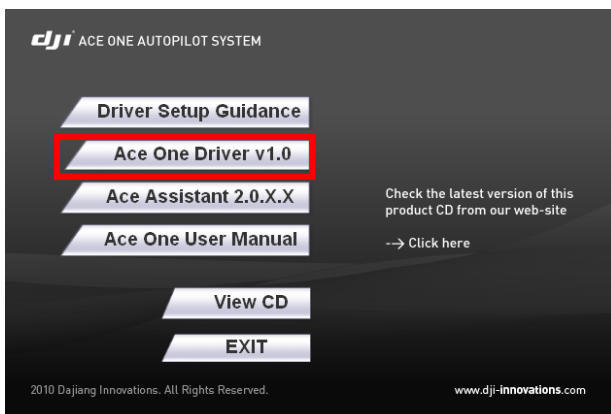
2 Power on your Ace One, and connect it to computer.
You will find a splash box appears in status bar which say:
Found New Hardware (DJI USB Virtual COM), **please close it and stop the automatic driver installation.**

Or you may find a splash window:

Welcome to the Found New Hardware Wizard, **please close it.**

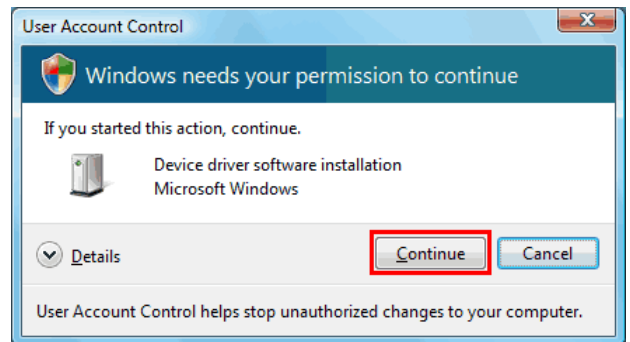
3 Please insert the Ace One product CD provided along with the package. It is an Auto-run DVD, If auto-run function has been disabled in your computer,
Please Open **[My Computer]** → **[DJI Setup]** → autorun.exe
Then, you will find the splash window as following shown.

4 Click the **[Ace One Driver v1.0]** button.

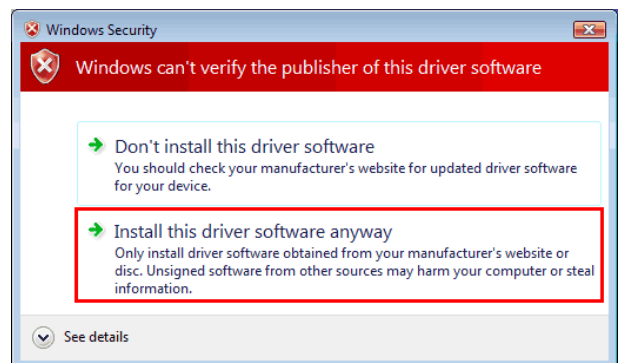


5 Follow the guidance, and press **[Next]** to continue.

6 The dialog **[User Account Control]** appears. Click the **[Continue]** button.



7 The question about the security will appear. Click the **[Install this driver software]** button.

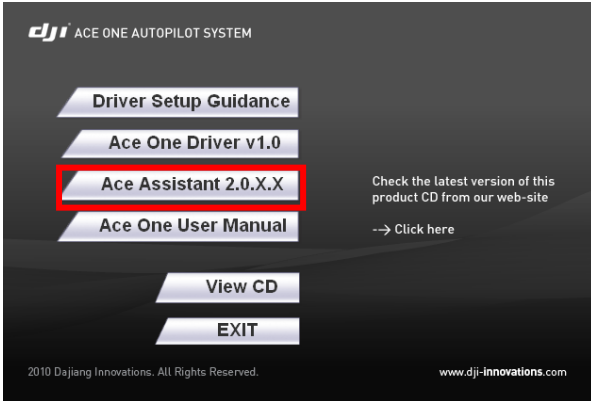


8 Installation of the driver software is completed. Please restart your computer and power cycle the Ace On

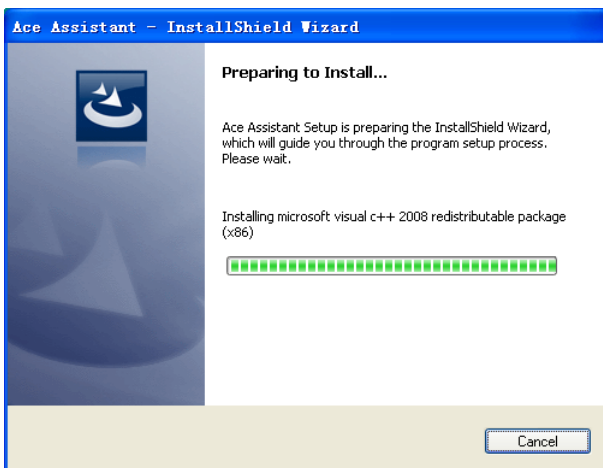
Ace Assistant Installation

1 Log-in your computer as administrator.

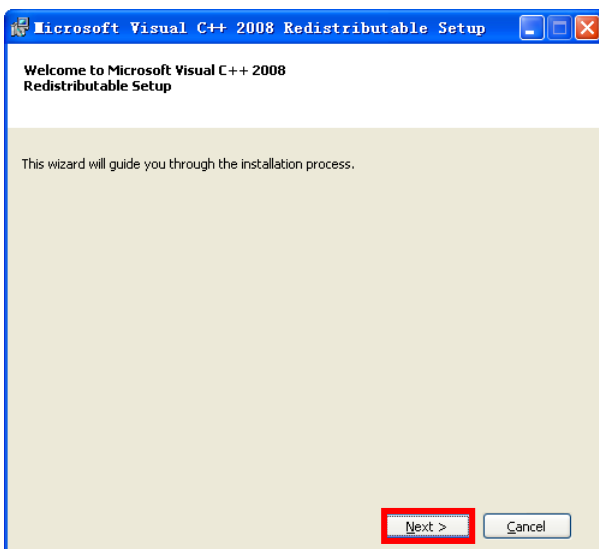
2 Click the [Ace Assistant 2.0.X.X] button.



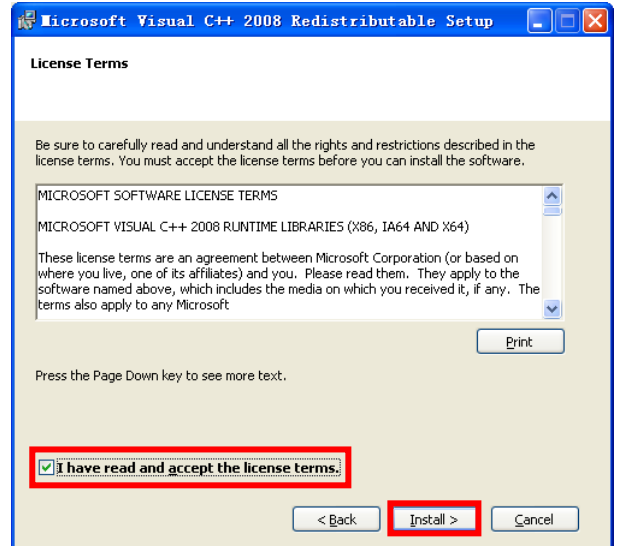
3 The dialog [Ace Assistant – InstallShield Wizard] appears.



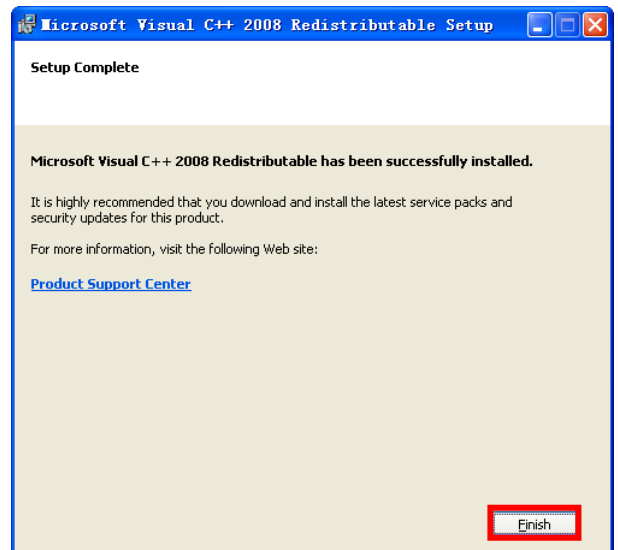
4 You will be asking to install [Microsoft Visual C++ 2008 Redistributable] package first, click [Next].



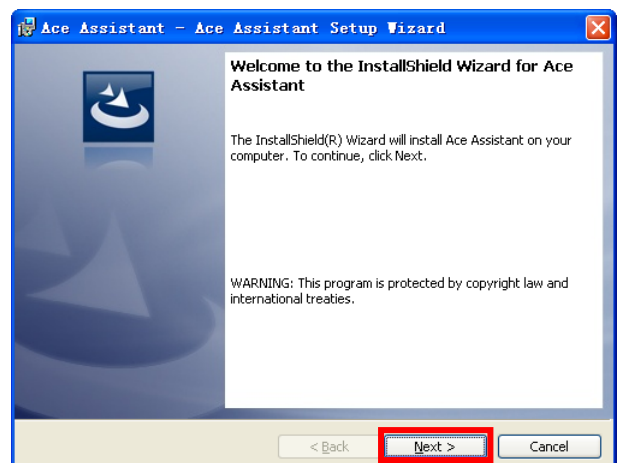
5 Tick the [I have read and accept the license terms], then click [Install].



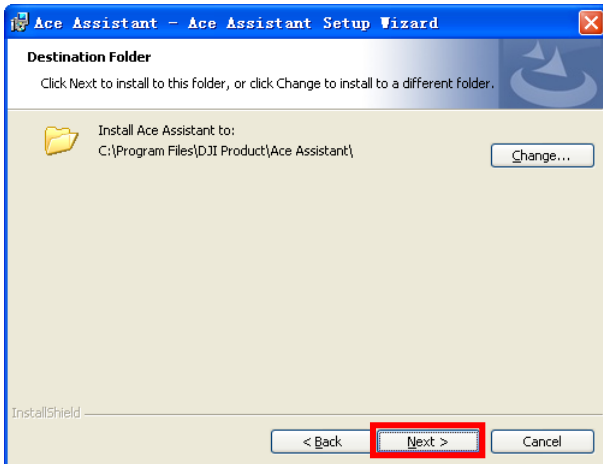
6 Click [Finish] when you've been asking to do.



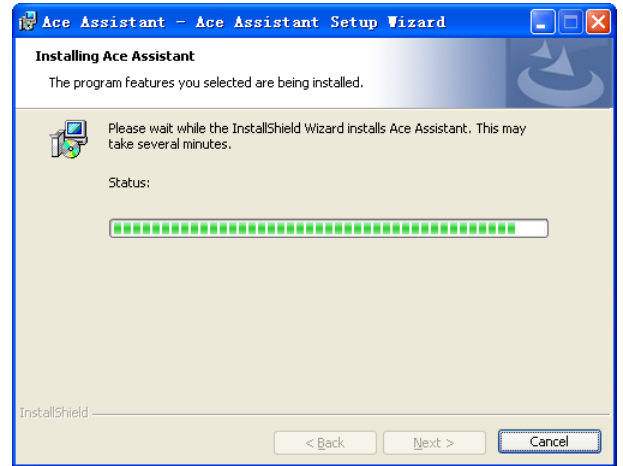
7 Came back to [Ace Assistant Setup Wizard], click [Next].



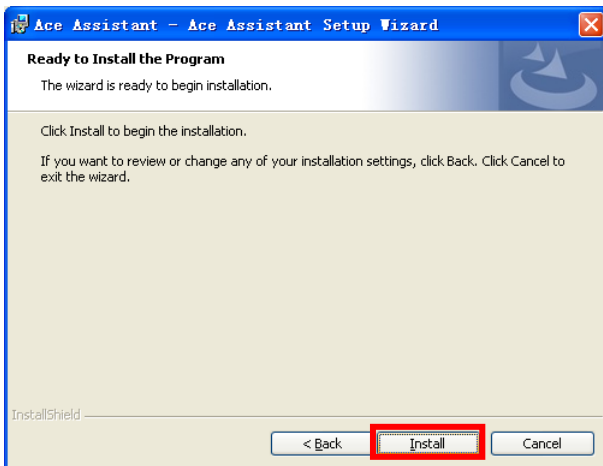
8 You can change the install destination by click **[Change...]**, click **[Next]** to continue.



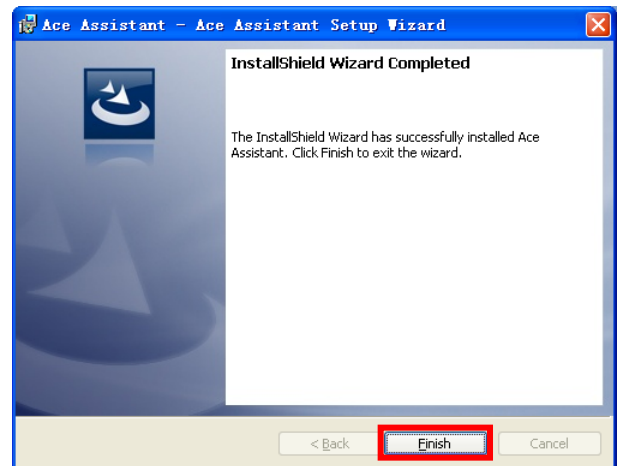
10 Please wait several minutes.



9 Click **[Install]** to begin the installation.



11 Click **[Finish]**, now you have finished the setup of Ace Assistant software.

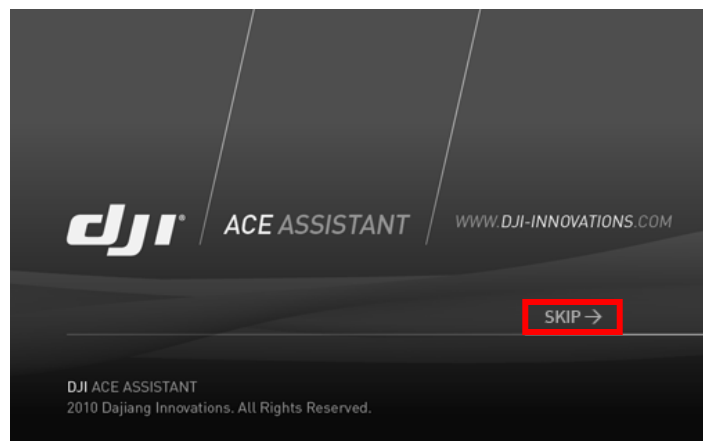


Find Ace Assistant software in your computer

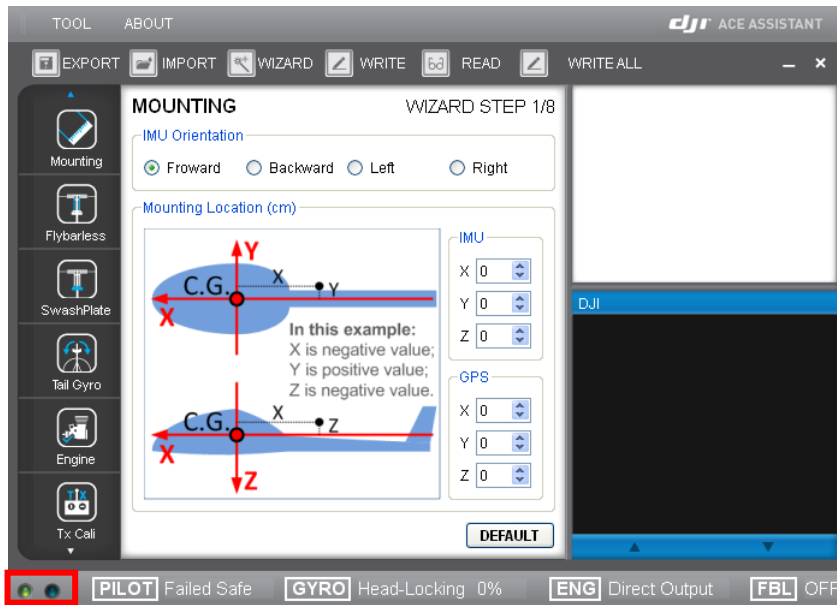
1 Ace Assistant software is part of Ace One autopilot system, please read through the Ace One User Manual before use it.

2 You can find **[Ace Assistant]**, by click **[Start]→[All Programs]→[DJI Product]→[Ace Assistant]→**  **Ace Assistant**

3 A splash window will appear as shown below, if your Ace One main controller has not been connected with your computer.

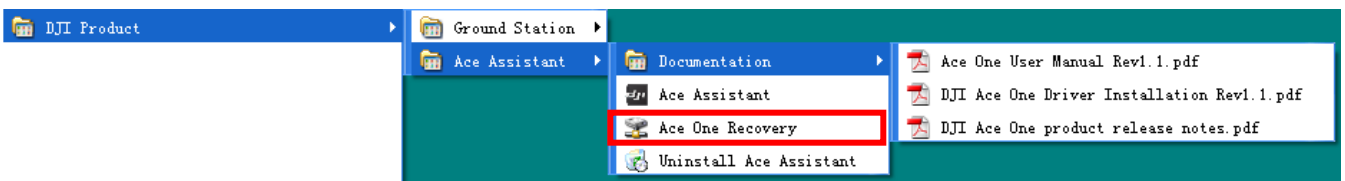


4 If you click **[SKIP→]** button as shown above, or Ace One main controller has been connected with your computer, the Ace Assistant software will appears as shown below.



5 If you have connected the Ace One main controller according to Ace One User Manual, but Ace Assistant software still could not found Ace One main controller (the green light will be in red which means disconnected).

Please click **[Start]→[All Programs]→[DJI Product]→[Ace Assistant]→[Ace One Recovery]**, then the connection problem should be solved. If you still have connection problem, please contact DJI customer support.



6 Please pay attention to our website for Ace One product update, click **[→Click here]** on the splash window of Ace One product CD, you can find the up-to-date contents there.

